



# ADASHI® Command Post

Response and Command Software for Effective Incident Management

ADASHI Command Post is the most comprehensive offering in the ADASHI product line. It builds upon the capabilities of ADASHI Lite and ADASHI First Response to deliver a robust incident and resource management system to meet the needs of emergency incident commanders and managers everywhere.

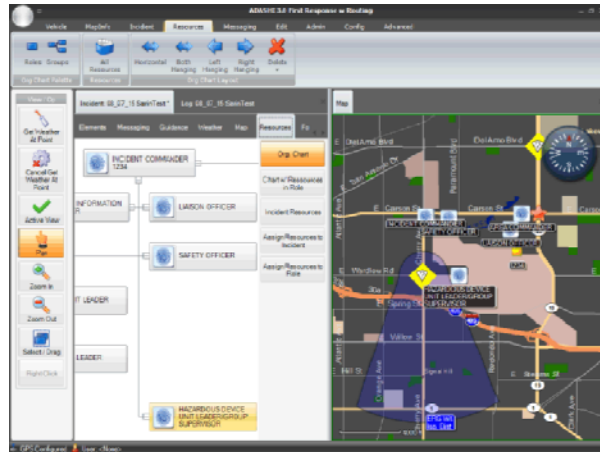
## Features:

### Map, Tracking, and AVL/CAD:

✦ **Street Maps Plus** – Includes NAVTEQ street maps for all of North America including information on hospitals, schools, stadiums, businesses and more.

✦ **Real-Time Vehicle Tracking** – Accepts data from a vehicle-mounted GPS and displays the vehicle location on its built-in street maps.

✦ **AVL Integration** – Reports vehicle location and status information automatically to AVL systems. Vehicle location is also automatically relayed to all ADASHI systems that share the same digital network for real-time display.



✦ **CAD Integration** – Accepts incident dispatch, routing and unit status messages either automatically from a CAD system, or entered manually.

### Local Data Integration:

✦ **View Local Data** – Displays local digital geographic information critical to field operations such as the locations of utility lines and fire hydrants, or overhead imagery. ADASHI displays any ESRI-compatible format.

✦ **Search Local Data** – Search the geographic database (including local information added) for features of interest within a region, or nearest to a particular location.

✦ **Real-Time Weather** – Displays weather information from the nearest NOAA or AWS weather station when internet access is available.

### Data Recording and Communications:

✦ **Incident Action Logging** – Automatically records and time-stamps all ADASHI operator actions for review.

✦ **Unit-to-Unit Communications** – Send/receive text messages to/from other ADASHI systems that share the same digital network.

✦ **Incident Data Sharing** – Receive and display incident information from other ADASHI systems that share the same digital network.

### **Situational Awareness:**

- ✦ **Custom Map Views** – Create custom map views for different needs. Map views combine maps and GIS feature layers relevant for a particular role or situation.
- ✦ **Complex Search** – Search the geographic database (including local information added) for complex features within a region or nearest to a particular location.
- ✦ **Facility Pre-Planning Data** – Find and display pre-planning data associated with a particular facility. Such data can include pre-defined items of interest like type of construction, street address and emergency contact, along with documents such as building plans, photographs, and response plans.
- ✦ **Pictometry Imagery** – Pictometry customers can seamlessly integrate oblique 4-view imagery and measurement tools for display and analysis. Pictometry display is automatically synchronized with ADASHI's standard 2-D maps.
- ✦ **Tactical View** – Automatically displays current locations of ADASHI-equipped vehicles along with the assigned locations for all units and personnel responding to the incident. Also displays incident map annotated by Incident Commander using ADASHI Command Post.

### **Incident Management:**

- ✦ **Incident and Element Location** – Locate and characterize one or more incidents on the map. Also locate and characterize separate Elements or chemical agents within a single Incident. Accepts location of the Incident automatically from a CAD system or entered manually.
- ✦ **Organization and Resources** – Displays the Incident Command Structure and the resources assigned or available to respond to the incident. Shows the location of the resources on the map.
- ✦ **Smart Forms** – Complete and print standard NIMS local incident management and reporting forms efficiently. ADASHI data automatically appears in the appropriate form fields.



### **All-Hazard Response:**

- ✦ **Contextual Guidance** – Automatically filters and presents only the relevant guidance data tailored to the specific incident type, hazard, and incident response role.
- ✦ **Incident Response Checklists** – Provides a list of relevant incident- and hazard-specific SOP checklists to associate with the incident. Actions are recorded in the built-in Incident Actions Log as items are checked off the associated checklists.
- ✦ **ERG 2008 and CAMEO Guidance** – Integrates the critical chemical hazard data that First Responders need from the ERG 2008 and CAMEO emergency response databases. Provides data for thousands of specific chemicals including emergency procedures, first aid, protective equipment and material properties.

- ✦ **All-Hazard Guidance** – Provides specific guidance for a broad range of hazardous situations including fire, crime, medical, search and rescue, and natural disasters. Guidance includes checklists and federally mandated procedures.
- ✦ **ALOHA for HAZMAT and Terrorist Incidents** – Provides airborne hazard prediction and mapping of hot/warm zones, isolation distances, and evacuation areas, based on real-time weather. Automatically sets ALOHA model parameters for the worst-case scenarios.
- ✦ **Sensor Data** – Acquires measurement data from networked chemical, biological and radiological sensors and displays the sensor's location, output and alarm status on the map.

#### ***Emergency Incident Pre-Planning:***

- ✦ **Resource Database Management** – Enter and maintain a list of resources including personnel, units, and equipment.
- ✦ **All-Hazards Database Management** – Expand and modify hazard categories, types and descriptions as needed to fit the organization's specific needs.
- ✦ **Guidance Database Management** – Supplement and edit the built-in guidance where local procedures may need to be incorporated.
- ✦ **Checklist Database Management** – Customize the built-in checklists for the various hazard types.
- ✦ **Facilities Database Management** – Add and maintain the pre-plan data and documents including building plans, photographs, and response plans associated with each facility of interest.
- ✦ **Smart Forms Database Management** – Add local incident management and reporting forms to the standard NIMS forms included with ADASHI. Also allows association of internal ADASHI variables with fields on the form to facilitate Smart Form data entry.

#### ***Real-Time Incident Action Planning and Management:***

- ✦ **Organization and Resource Assignment** – Graphically create an organizational chart using groups and roles defined in NIMS and the local command system. Resources can then be assigned to roles by dragging and dropping them on to the organizational chart.
- ✦ **Locate Roles and Resources** – Drag and drop roles and resources on the map to reflect either their current location or planned location.
- ✦ **Incident Map Annotation** – Provides a simple drawing and text tool for easily overlaying command notes on the incident map. The annotated map is automatically shared with other ADASHI systems responding to that incident.

#### ***Routing Option Available:***

- ✦ **In-Vehicle Navigation** – A fully integrated stand-alone navigation solution including route generation, display, and turn-by-turn directions (text and voice). Accepts routing information directly from CAD and AVL systems.

**PRICE:**

ADASHI Command Post 3.0		ADASHI Navigation and Routing Option 3.0	
US/Canadian Version*	GSA: \$5,995 MSRP: \$6,235	US/Canadian Version*	GSA: \$300 MSRP: \$312
International Version**	MSRP: \$7,795	International Version**	MSRP: \$390
*Includes NAVTEQ US and Canadian Maps **Maps are extra		*Includes NAVTEQ US and Canadian Maps **Maps are extra	

**CONTACT US:**

Telephone: 800.734.6956 x228 (USA) or 001.734.973.1177 x228 (International)

Email: [sales@ADASHI.org](mailto:sales@ADASHI.org)